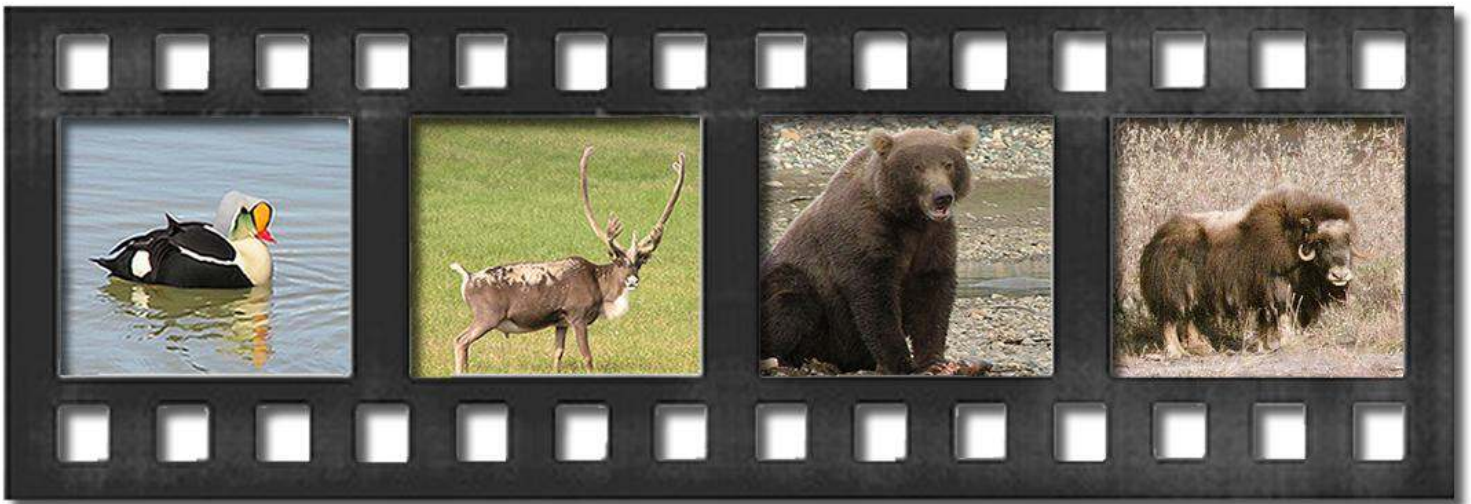


OUZEL

EXPEDITIONS



ALASKAN WILDERNESS ADVENTURES




Paul & Sharon Allred
P. O. BOX 935 GIRDWOOD, ALASKA 99587
TOLL FREE: 1-800-825-8196
LOCAL: 1-907-783-2216
FAX: 1-907-783-3220
E-MAIL: PAUL@OUZEL.COM
SITE: WWW.OUZEL.COM


OUZEL EXPEDITIONS



ARCTIC WILDERNESS ADVENTURES

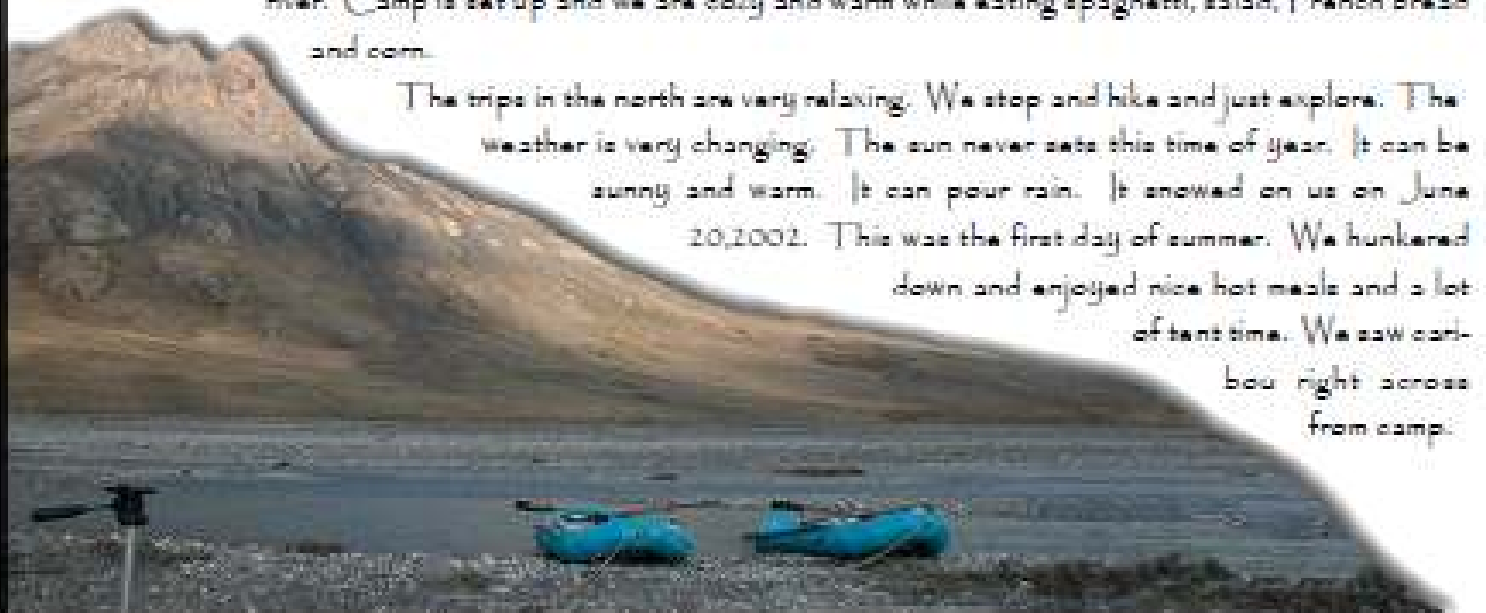


As we fly from Fairbanks toward Arctic Village civilization diminishes below our plane. We find ourselves looking in all directions and calling out narratives of the view below. Wow, look at that. What's the name of those mountains, of that river? We have only begun our adventure and it is apparent that this country is different from anything we have ever experienced. It is hard to relate to the size and the raw beauty we see below us. We land in Arctic Village and then we begin to ferry in to the headwaters of our chosen river. We fly in a smaller plane over boreal forests and then into the Brooks Range. The panorama below keeps changing quickly and dramatically. It is so vivid as you see it and yet impossible to relate to another in it's entirety and emotional effect.



Once we land and the plane flies away we look around at our surroundings. Arctic National Wildlife Refuge full on in front of us. We hear sounds of the nature around us, that is all. Until the plane returns with the next group of our people that is all we will hear. After being in business for 27 years we have seen some very incredible places. This is the best. Nothing can compare.

We immediately go in various directions making discoveries. Right by camp a Smiths Longspur was discovered. Others were photographing flowers. Still others are standing just looking at the mountains and the river. Camp is set up and we are cozy and warm while eating spaghetti, salad, French bread and corn.



The trips in the north are very relaxing. We stop and hike and just explore. The weather is very changing. The sun never sets this time of year. It can be sunny and warm. It can pour rain. It snowed on us on June 20, 2002. This was the first day of summer. We hunkered down and enjoyed nice hot meals and a lot of tent time. We saw caribou right across from camp.

Arctic National Wildlife Refuge has something for everyone. There are butterflies, wild flowers, birds, plants, mammals, landscape, the river, waterfalls, geology, animal tracks and pure nature like one cannot imagine. At first glance it is so deceiving. So vast so seemingly sparse and empty till you look closer. One square foot of ground has so much going on it is mind staggering. Lichens of several types are on one rock as one gets closer. Perhaps as many as 7 different types of wild flowers in one very small area. It is a miniature forest.



Birds migrate from six continents to these 19.2 million acres. Birds come from 50 states in the summer to raise their young. It is quite a spectacle. There are 150 species of birds in ANWR. We have seen many

over the years. Perhaps as many as 80 species of birds have been identified. Trip lists are available on request.

The Porcupine Caribou Herd lives here. We awoke in the night one trip and we were completely surrounded. As far as you could see in every direction there were caribou and their young followed by bears, wolves, and eagles. Wow, we felt like we were in Africa.

This is a land of extremes. Extreme weather, beauty, views, animals, constant daylight and memories can be absorbed here.

The Kongakut River is in the northeastern corner of Alaska by Canada and runs into the Beaufort Sea. It has a lot of overflow ice, which makes for wonderful photos. The hiking is very good and so is the birding and animal viewing.



The Hulshuls begins in the Brooks Range as does the Kongakut and flows through deep canyons before flowing out to the coastal plain. It clips right along with some rapids on the way. The hiking is good, and so is wildlife viewing. The picture of the Musk Ox with hikers on bottom of the page was taken there.



Both rivers are wonderful with many chances to see Dall sheep, Grizzlies, Musk Ox, Moose, Caribou, Wolverine, River Otters, Mink, Ermine, Wolves, Arctic Fox, Red Fox, Arctic ground squirrel, Voles, Snowshoe Hare, Shrews, and many species of nesting birds. The wildflowers are quite beautiful and interesting. We identified many species and we found ourselves listing pages of wildflowers and birds at night.

*The Arctic National Wildlife Refuge is a place you'll never forget.
Come join us.*



SAMPLE TRIP ITINERARY FOR ANWR

DAY 1: Trip participants meet the night before the trip in Fairbanks. In the morning we load our gear onto a small commercial plane and fly 150 miles north, over the Steese and White Mountains to Arctic Village.



Arctic Village is 118 miles northeast of the Arctic Circle on the southern border of the Arctic National Wildlife Refuge. We meet our bush pilot here, and fly out to the river and spend some time exploring headwater valleys and mountains on foot, before beginning our 80-to 90-mile journey down the river.

DAYS 2-8: The upper River is swift and challenging, with rocky rapids and walls of river ice to negotiate through. Braided channels add to the excitement. We enter a canyon with rock walls towering above us, as we negotiate Class II and III rapids and

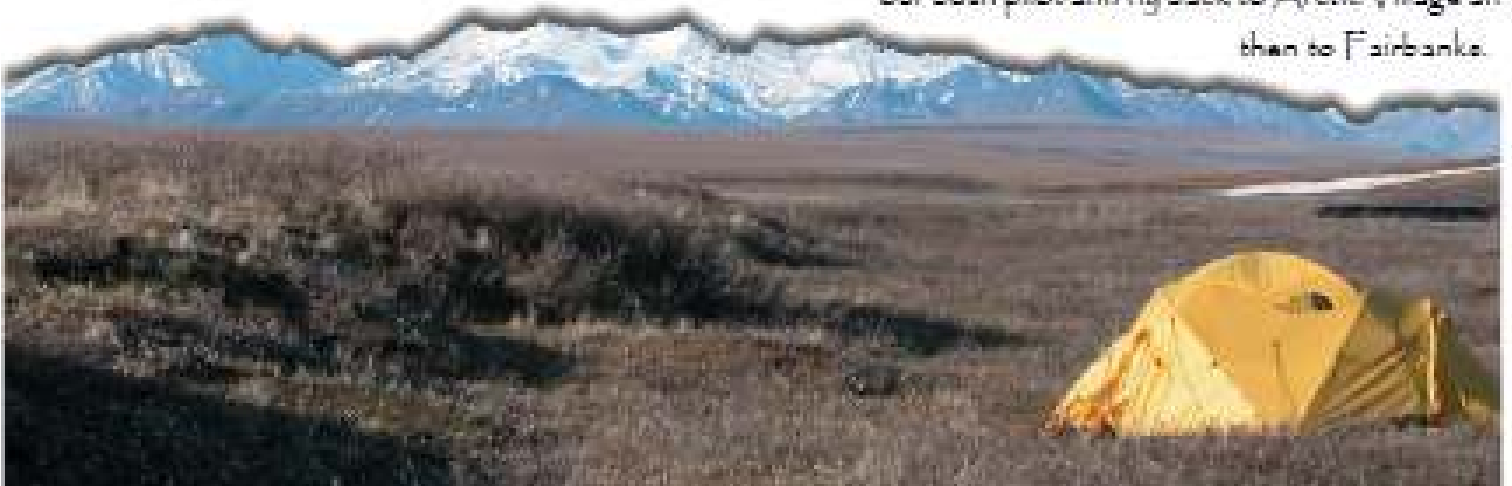
twisting turns. The river's pace slackens a bit as it abruptly breaks out onto the arctic coastal plain. Layover days along the way provide us with ample time for hiking. The hiking in this area is outstanding, and we take full advantage of the constant daylight.

We travel in mountainous tundra country north of the treeline.

A green carpet of tundra lies across the land, and wildflowers are everywhere. The river begins swiftly and is shallow and braided with a few lively riffles. There may be overflow ice shelves that form as a river freezes in the winter. The ice remains long into the summer on arctic rivers. We try to take a couple more layover days for day hiking. Later, we'll enter a narrow canyon, and negotiate the whitewater. Each day we stop to camp on gravel bars, and spend free time hiking up into mountains and valleys to search for birds and flowers.

We now through the mountains, foothills, and out onto the coastal plain. With luck, we'll see bands of caribou roaming across the tundra. Finding our pick-up point is challenging at times, as suitable gravel bars for landing a plane can be swept away by spring run-off on the river. It's all part of the adventure.

DAY 9: Trip's end is About 6 miles inland from the Beaufort Sea. Weather permitting, we are picked up by our bush pilot and fly back to Arctic Village and then to Fairbanks.





CHECK LIST FOR ANWR

- __ Long Underwear, 2 pair (Fleece tops & bottoms mid to heavy wt.)
- __ Gortex rain coat & pants.
- __ Wool or fleece hat
- __ Wool or fleece gloves
- __ Baseball hat or hat with brim
- __ Wool or Fleece pants 1 pair
- __ Jeans or other pants 1 pair
- __ 1 Wool sweater or fleece jacket
- __ 2 t-shirts
- __ 1 Turtleneck or long sleeved shirt
- __ Wool or synthetic socks, 4 pair (different weights)
- __ Light weight waterproof hiking boots (for tundra hiking many wet areas)
- __ Polarized sunglasses, a must, the lighter the better
- __ Personal gear (towel, toothbrush, soap, wet wipes, medications insect repellent, etc.)
- __ Binoculars
- __ Camera and film or memory (a lot)
- __ Daypack
- __ Notebook and pen
- __ Personal water purifier
- __ Personal liquor supply
- __ Headnet

This is a general clothing list for most of the summer in ANWR from mid June through early July. You need what is on this list. Remember that summer weather conditions in Alaska can vary from sunny hot days to cold rainy days.



POSSIBLE MAMMAL SIGHTINGS IN THE ARCTIC

INSECTIVORES (shrews)

- ___ Masked (Common) Shrew (*Sorex cinereus*) Moist tundra, bogs, and forests.
- ___ Dusky Shrew (*Sorex obscurus*) Wet meadows south of the mountains.
- ___ Arctic Shrew (*Sorex arcticus*) Wet sedge tundra.
- ___ Pygmy Shrew (*Sorex hoyi*) Forests and bogs south of the mountains.

LAGOMORPHS (hares and rabbits)

- ___ Snowshoe Hare (*Lepus americanus*) Forests and shrub thickets.

RODENTS (squirrels, mice, porcupines, etc.)

- ___ Alaska Marmot (*Marmota flaviventris*) Rocky, mountainous areas.
- ___ Arctic Ground Squirrel (*Spermophilus parryi*) Dry, sandy areas.
- ___ Red Squirrel (*Tamiasciurus hudsonicus*) Spruce forests.
- ___ Muskrat (*Ondatra zibethicus*) Ponds and marshes south of the mountains.
- ___ Beaver (*Castor canadensis*) Wooded streams.
- ___ Meadow Vole (*Microtus pennsylvanicus*) Meadows and open forests south of the mountains.
- ___ Tundra Vole (*Microtus oeconomus*) Meadows near water south of the mountains.
- ___ Yellow-cheeked Vole (*Microtus xanthognathus*) Spruce forests near bogs.
- ___ Singing Vole (*Microtus miurus*) Tundra and shrub thickets near water.
- ___ Northern Red-backed Vole (*Clethrionomys rutilus*) Tundra and forests.
- ___ Brown Lemming (*Lemmus sibiricus*) Wet tundra north of the mountains.
- ___ Northern Bog Lemming (*Synaptomys borealis*) Bogs, spruce forests, and meadows south of the mountains.
- ___ Collared Lemming (*Dicrostonyx torquatus*) Sedge tundra.
- ___ Meadow Jumping Mouse (*Zapus hudsonius*) Moist meadows and shrub thickets south of the mountains.
- ___ Porcupine (*Erethizon dorsatum*) Forests, shrub thickets, and tundra.

CANIDS (foxes and wolves)

- ___ Coyote (*Canis latrans*) Rare in open areas.
- ___ Gray Wolf (*Canis lupus*) All plant communities throughout the Refuge.
- ___ Arctic Fox (*Alopex lagopus*) Tundra north of the mountains.
- ___ Red Fox (*Vulpes vulpes*) All plant communities throughout the Refuge.

FELIDS (cats)

- ___ Lynx (*Felis lynx*) Forests throughout the Refuge.

URSIDS (bears)

- ___ Black Bear (*Ursus americanus*) Forests throughout the Refuge.
- ___ Brown Bear (*Ursus arctos*) Open areas throughout the Refuge.
- ___ Polar Bear (*Ursus maritimus*) Along the coast and on ocean ice.

MUSTELIDS (weasels)

- ___ Marten (*Martes americana*) Spruce forests.
- ___ Ermine (*Mustela erminea*) Open forests and tundra.
- ___ Least Weasel (*Mustela nivalis*) Open, wet areas.
- ___ Mink (*Mustela vison*) Near wet areas south of the mountains.
- ___ Wolverine (*Gulo gulo*) Forests and tundra.
- ___ River Otter (*Lutra canadensis*) Rivers and lakes mainly south of the mountains.

CERVIDS (deer)

- ___ Moose (*Alces alces*) Willow thickets and wet areas.
- ___ Caribou (*Rangifer tarandus*) All plant communities throughout the Refuge.

BOVIDS

- ___ Muskox (*Ovibos moschatus*) Tundra north of the mountains.

Possible Bird sightings in the Arctic

LOONS

___ Redthroated

Loon Fairly
common coastal breeder, common coastal migrant. Rare visitor to the Brooks Range and across the inland coastal plain.

___ Pacific Loon Common

breeder on both the north and south slopes. Common coastal migrant. Uncommon breeder in Brooks range.

___ Common Loon Uncommon

breeder on the slope slope. Rare migrant or visitor along the coast.

___ Yellowbilled

Loon Uncommon

migrant along the coast, rare migrant across the inland coastal plain.

GREBES

___ Horned Grebe Common

breeder on the south slope. Casual summer visitor to the north slope.

___ Rednecked

Grebe Uncommon

breeder on the south slope. Casual summer visitor to the north slope.

SHEARWATER

___ Shorttailed

Shearwater Casual

summer visitor along the coast. Uncommon fall migrant, mostly offshore.

WATERFOWL

___ Tundra Swan Common

breeder on the north slope, especially along the coast.

___ Trumpeter Swan Rare

breeder along the coast.

___ Greater Whitefronted

Goose Possible

rare breeder on north slope. Uncommon to fairly common spring migrant and common to abundant fall migrant on the north slope.

___ Snow Goose Rare

breeder on the north slope. Uncommon spring migrant throughout. Abundant fall migrant on the north slope.

___ Ross' Goose Casual

spring visitor to the north slope.

___ Brant Uncommon

breeder near the coast. Abundant coastal migrant.

___ Canada Goose Uncommon

breeder on both the north and south slopes. Uncommon to fairly common migrant on the north slope.

2

___ Greenwinged

Teal Common

breeder on the south slope and in the Brooks Range, uncommon breeder on the inland coastal plain, rare breeder and migrant along the coast.

___ Mallard Uncommon

breeder, but common summer resident, on the south slope and in the Brooks Range. Rare breeder and uncommon migrant on the north slope.

___ **Northern Pintail** Common

breeder on the south slope. Fairly common breeder and common summer resident and migrant on the north slope.

___ **Northern Shoveler** Uncommon

breeder on the south slope. Rare to uncommon summer visitor and migrant on the north slope.

___ **Eurasian Wigeon** Casual

visitor to the north slope.

___ **American Wigeon** Common

breeder on the south slope and in the Brooks Range. Uncommon to fairly common migrant and visitor on the north slope.

___ **Canvasback** Rare

visitor south slope, casual migrant on the north slope.

___ **Greater Scaup** Uncommon

to fairly common migrant along the coast, locally rare to uncommon summer visitor on the north slope. Uncommon visitor to the Brooks Range.

___ **Lesser Scaup** Abundant

breeder on the south slope, common breeder in the Brooks Range, rare breeder and summer visitor on the inland coastal plain.

___ **Common Eider** Uncommon

breeder along the coast. Fairly common summer resident and migrant along the coast, especially offshore.

___ **King Eider** Uncommon

breeder along the coast. Uncommon to fairly common migrant along the coast, especially offshore.

___ **Spectacled Eider** Uncommon

breeder along the coast.

___ **Steller's Eider** Casual

to rare visitor along the coast. Formerly a rare breeder along the coast.

___ **Harlequin Duck** Uncommon

breeder on the south slope and in the Brooks Range, rare breeder on the inland coastal plain. Uncommon summer visitor on the north slope.

___ **Oldsquaw** Common

breeder on the north slope. Uncommon migrant on the south slope, abundant summer resident and migrant along the coast.

___ **Black Scoter** Uncommon

migrant along the coast.

___ **Surf Scoter** Uncommon breeder on the south slope. Fairly common summer resident and migrant along the coast.

___ **Whitewinged Scoter** Common breeder on the south slope and in the Brooks Range, possible breeder on the inland coastal plain. Uncommon summer resident and migrant along the coast.

___ **Common Goldeneye** Probable uncommon breeder on the south slope. Rare spring migrant and summer visitor to the coast.

___ **Barrow's Goldeneye** Probable uncommon visitor or rare breeder on the south slope and in the Brooks Range.

___ **Bufflehead** Common breeder on the south slope.

___ **Common Merganser** Casual

summer visitor to the north slope.

___ **Redbreasted Merganser** Common breeder in the Brooks Range, uncommon breeder on the inland coastal plain, rare breeder on the coast. Fairly common coastal migrant.

HAWKS, EAGLES AND FALCONS

___ **Bald Eagle** Rare breeder and uncommon summer resident on the south slope. Rare summer visitor in the Brooks Range.

___ **Northern Harrier** Probable uncommon breeder, but common summer resident, in the Brooks Range, rare to

uncommon summer visitor to the north slope.

___ **Northern Goshawk** Uncommon breeder on the south slope. Rare visitor to the Brooks Range and foothills of the inland coastal plain.

___ **Sharpshinned Hawk** Uncommon summer resident on the south slope.

___ **Swainson's Hawk** Rare breeder and summer visitor on the south slope.

___ **Roughlegged Hawk** Common breeder in the Brooks Range, uncommon breeder on the south slope and the inland coastal plain, rare breeder on the coast.

___ **Golden Eagle** Common breeder in the Brooks Range, probable rare breeder in the inland coastal plain. Fairly common, but variable, summer resident on the north slope.

___ **American Kestrel** Uncommon breeder on the south slope, rare breeder in the Brooks Range. Casual summer visitor to the north slope.

___ **Merlin** Uncommon breeder in the Brooks Range, possible rare breeder in the foothills of the inland coastal plain. Rare visitor elsewhere.

___ **Peregrine Falcon** Common breeder on the south slope, uncommon summer resident and breeder, in the foothills of the inland coastal plain. Rare breeder on the coast. Uncommon summer visitor and/or migrant throughout.

___ **Gyr Falcon** Uncommon permanent resident and breeder in the Brooks Range and foothills of the inland coastal plain. Rare to uncommon visitor elsewhere.

GROUSE AND PTARMIGAN

___ **Spruce Grouse** Uncommon resident and probable breeder on the south slope.

___ **Willow Ptarmigan** Fairly common to locally abundant resident breeder on the south slope, in the Brooks Range, and on the inland coastal plain. Uncommon breeding resident along the coast.

___ **Rock Ptarmigan** Common breeder throughout. Rare winter resident along the coast, but common year round resident elsewhere.

COOTS AND CRANES

___ **American Coot** Casual or rare visitor to the south slope.

___ **Sandhill Crane** Rare breeder on the north slope, probable rare breeder on the south slope. Uncommon summer resident along the coast. Rare spring migrant across the inland coastal plain.

SHOREBIRDS

___ **Blackbellied Plover** Rare breeder on the north slope. Uncommon spring, and fairly common fall migrant along the coast. Rare migrant on the inland coastal plain.

___ **American Golden Plover** Fairly common breeder on the north slope and into the Brooks Range. Common to abundant fall migrant along the coast.

___ **Semipalmated Plover** Common breeder on the south slope and in the Brooks Range, rare breeder on the north slope. Rare coastal visitor and/or migrant.

___ **Killdeer** Casual visitor to the north slope.

___ **Eurasian Dotterel** Casual summer visitor to the north slope.

___ **Lesser Yellowlegs** Abundant breeder on the south slope. Casual migrant along the coast.

___ **Solitary Sandpiper** Abundant breeder on the south slope.

___ **Wandering Tattler** Common

breeder in the Brooks Range, uncommon breeder on the inland coastal plain.

5

___ **Spotted Sandpiper** Common

breeder on the south slope and in the Brooks Range, uncommon breeder on the inland coastal plain. Rare coastal visitor.

___ **Upland Sandpiper** Common

breeder in the Brooks Range and adjacent foothills on both the north and south slopes.

___ **Whimbrel** Uncommon

breeder in the Brooks Range and adjacent foothill areas on both the south slope and inland coastal plain. Uncommon visitor over the entire north slope.

___ **Hudsonian Godwit** Casual

visitor to the north slope.

___ **Bartailed**

Godwit Rare

migrant along the coast.

___ **Ruddy Turnstone** Fairly

common breeder and fall migrant on the north slope.

___ **Surfbird** Rare

breeder in the Brooks Range.

___ **Red Knot** Rare

migrant along the coast.

___ **Sanderling** Casual

breeder on the inland coastal plain. Rare spring and uncommon fall migrant along the coast.

___ **Semipalmated Sandpiper** Common

to locally abundant breeder on the north slope.

Common fall migrant along the coast.

___ **Western Sandpiper** Casual

spring and fairly common fall migrant along the coast.

___ **Least Sandpiper** Common

breeder on the south slope and in the Brooks Range.

Rare migrant on the north slope.

___ **Whiterumped**

Sandpiper Possible

rare breeder along the coast. Rare spring

migrant and uncommon fall migrant along western coastal sections.

___ **Baird's Sandpiper** Fairly

common breeder on the north slope, uncommon breeder in the Brooks Range. Uncommon migrant on the north slope.

___ **Pectoral Sandpiper** Common

breeder on the north slope. Abundant fall migrant, especially along the coast.

___ **Sharptailed**

Sandpiper Casual

migrant on the north slope.

___ **Dunlin** Uncommon

coastal breeder. Fairly common fall migrant along the coast.

___ **Stilt Sandpiper** Uncommon

to fairly common breeder on the north slope. Fairly common fall migrant on the north slope.

___ **Buffbreasted**

Sandpiper Locally

rare to fairly common breeder on the nonh slope.

6

___ **Ruff** Casual
visitor to the north slope.

___ **Longbilled Dowitcher** Uncommon
breeder, but fairly common summer resident, on the north slope. Common fall migrant on the north slope.

___ **Common Snipe** Common
breeder on the south slope and in the Brooks Range, rare summer resident and possible breeder on the north slope.

___ **Rednecked Phalarope** Common
breeder on the south slope and in the Brooks Range, fairly common breeder on the north slope. Common to locally abundant fall migrant along the coast.

___ **Red Phalarope** Fairly
common breeder along the coast, uncommon breeder over the inland coastal plain. Uncommon fall migrant along the coast.

JAEGERS, GULLS AND TERNS

___ **Pomarine Jaeger** Locally
rare to common breeder and summer resident on the north slope. Common spring migrant and uncommon fall migrant on the north slope.

___ **Parasitic Jaeger** Rare
breeder in the northern part of the Brooks Range, rare to uncommon breeder, but fairly common summer resident, on the north slope.

___ **Longtailed Jaeger** Common
breeder in the Brooks Range, uncommon to fairly common breeder on the north slope. Fairly common spring migrant and common summer resident on the north slope.

___ **Bonaparte's Gull** Uncommon
breeder on the south slope, casual visitor to the north slope.

___ **Mew Gull** Common
breeder on the south slope and in the Brooks Range, probable rare breeder in the foothills of the inland coastal plain. Rare spring migrant and summer visitor to the north slope.

___ **Herring Gull** Uncommon
breeder on the south slope and in the Brooks Range. Rare migrant and summer visitor to the north slope.

___ **Thayer's Gull** Rare
migrant and summer visitor to the north slope.

___ **Slatybacked Gull** Casual
or rare visitor to the north slope.

___ **Glaucous Gull** Common
coastal breeder, uncommon summer resident and probable breeder on the inland coastal plain. Common to abundant migrant along the coast.

___ **Blacklegged Kittiwake** Rare
to uncommon coastal migrant, mostly offshore.

___ **Ross' Gull** Rare

migrant along the coast in late fall.

7

___ **Sabine's Gull** Uncommon
coastal breeder. Uncommon to fairly common fall
migrant along the coast, mostly offshore.

___ **Ivory Gull** Rare
migrant along the coast.

___ **Arctic Tern** Uncommon
breeder, and common summer resident, on the south slope
and in the Brooks Range, fairly common breeder and migrant along the coast. Rare
breeder on the inland coastal plain.

ALCIDS

___ * **Thickbilled**

Murre Rare
coastal migrant. All sightings have been recorded as
Murre spp. Identification is surmised based on proximity to known murre nesting
colonies.

___ **Black Guillemot** Rare
coastal breeder. Uncommon migrant and summer visitor.

___ **Horned Puffin** Casual
visitor along the coast.

OWLS

___ **Great Horned Owl** Rare
to uncommon resident breeder on the south slope.

___ **Snowy Owl** Variable,
from rare coastal visitor in low lemming years to uncommon
coastal breeder and common summer resident in high lemming years.

___ **Northern HawkOwl**

Uncommon
resident breeder on the south slope.

___ **Great Gray Owl** Probable
rare resident breeder on the south slope.

___ **Shorteared**

Owl Variable,
from rare spring visitor and/or migrant in low microtine
areas to fairly common to common breeder in high microtine areas, throughout.

___ **Boreal Owl** Probable
resident breeder on the south slope.

NIGHTHAWKS

___ **Common Nighthawk** Casual
visitor to the north slope.

HUMMINGBIRDS

___ **Rufous Hummingbird** Casual
or rare visitor to the south slope and Brooks Range.

8

KINGFISHERS

___ **Belted Kingfisher** Uncommon
summer resident and possible breeder on the south
slope.

WOODPECKERS

___ **Downy Woodpecker** Uncommon
resident breeder on the south slope.

___ **Hairy Woodpecker** Probable
uncommon resident breeder on the south slope.

___ **Threetoed**

Woodpecker Uncommon
breeder, and probable resident, on the south slope.

___ **Northern Flicker** Uncommon
breeder on the south slope and in the Brooks Range.

FLYCATCHERS

___ **Oliv-sided**
Flycatcher Uncommon
breeder on the south slope.

___ **Alder Flycatcher** Common
breeder on the south slope.

___ **Hammond's Flycatcher** Accidental
on the north slope.

___ **Eastern Phoebe** Accidental
on the north slope.

___ **Say's Phoebe** Common
breeder in the Brooks Range, casual visitor to the north slope.

___ **Eastern Kingbird** Accidental
on the north slope.

LARKS

___ **Horned Lark** Common
breeder in the Brooks Range, rare breeder and visitor to the inland coastal plain. Uncommon visitor to the coast.

SWALLOWS

___ **Tree Swallow** Uncommon
breeder on the south slope, casual visitor to the north slope.

___ **Violetgreen**
Swallow uncommon
breeder on the south slope and on the southside of the Brooks Range, casual visitor to the north slope.
9

___ **Bank Swallow** Uncommon
summer visitor and probable uncommon breeder on the south slope. Casual migrant and summer visitor to the north slope.

___ **Cliff Swallow** Locally
common breeder on the south slope and in the Brooks Range. Casual visitor to the north slope.

___ **Barn Swallow** Rare
visitor to the north slope.

JAYS AND RAVENS

___ **Gray Jay** Common
breeder, and uncommon resident, on the south slope. Rare breeder in the Brooks Range. Casual visitor to the north slope.

___ **Common Raven** Uncommon
resident throughout, but probably breeds only on the south slope and in the Brooks Range.

CHICKADEES

___ **Blackcapped**
Chickadee Probable
uncommon breeding resident in the extreme southern portions of refuge.

___ **Siberian Tit** Rare
and local breeder in the Brooks Range.

___ **Boreal Chickadee** Uncommon
resident breeder on the south slope.

DIPPERS

___ **American Dipper** Locally
uncommon resident on the south slope, in the Brooks Range, and on the inland coastal plain.

THRUSHES

___ **Arctic Warbler** Uncommon
breeder on the south slope and in the Brooks Range.
Casual or rare visitor on the north slope.

___ **Rubycrowned**

Kinglet Common

breeder on the south slope and in the Brooks Range.

___ **Bluethroat** Locally

rare migrant and breeder on the inland coastal plain.

___ **Northern Wheatear** Common

breeder in the Brooks Range, rare visitor to the north slope.

___ **Townsend's Solitaire** Uncommon

summer resident and probable breeder on the south slope and on the south side of the Brooks Range.

10

___ **Graychecked**

Thrush Common

to abundant breeder on the south slope and on the southside of the Brooks Range. Casual visitor to the north slope.

___ **Swainson's Thrush** Uncommon

summer resident and probable breeder on the south slope.

___ **Hermit Thrush** Possible

rare breeder on the south slope. Casual migrant or visitor to the north slope.

___ **American Robin** Abundant

breeder on the south slope, uncommon breeder in the Brooks Range, casual summer visitor on the north slope.

___ **Varied Thrush** Common

breeder on the south slope. Casual or rare visitor to the north slope.

WAGTAILS AND PIPITS

___ **Yellow Wagtail** Locally

rare to fairly common breeder on the inland coastal plain and in the northern foothills of the Brooks Range. Probable breeder on the coast. Rare visitor to the south slope.

___ **American Pipit** Common

breeder in the Brooks Range, rare breeder across the inland coastal plain. Fairly common fall migrant across the inland coastal plain.

WAXWINGS

___ **Bohemian Waxwing** Common

summer resident and probable breeder on the south slope.

___ **Cedar Waxwing** Accidental

on the north slope.

SHRIKES

___ **Northern Shrike** Fairly
common breeder on the south slope and in the Brooks
Range, rare visitor and possible breeder on the inland coastal plain.

WARBLERS

___ **Orangecrowned
Warbler** Uncommon
breeder on the south slope. Casual migrant
on the north slope.

___ **Yellow Warbler** Uncommon
breeder on the south slope, rare breeder in the Brooks
Range, and probable rare breeder on the inland coastal plain. Casual visitor along the
coast.

11

___ **Magnolia Warbler** Accidental
on the north slope.

___ **Yellowrumped
Warbler** Common
breeder on the south slope, rare breeder in the
Brooks Range. Casual visitor to the north slope.

___ **Palm Warbler** Accidental
or casual on the south slope.

___ **Blackpoll Warbler** Uncommon
summer resident and probable uncommon breeder
on the south slope. Casual visitor to the north slope.

___ **Northern Waterthrush** Uncommon
summer resident and probable uncommon
breeder on the south slope.

___ **Kentucky Warbler** Accidental
on the north slope.

___ **Wilson's Warbler** Uncommon
breeder on the south slope. Casual fall migrant on
the north slope.

___ **Canada Warbler** Accidental
on the north slope.

SPARROWS

___ **American Tree Sparrow** Abundant
breeder on the south slope and in the Brooks
Range, locally rare to fairly common breeder across the inland coastal plain. Casual
visitor to the coast.

___ **Chipping Sparrow** Casual
summer visitor to the north slope.

___ **Claycolored
Sparrow** Accidental
on the north slope.

___ **Savannah Sparrow** Locally
uncommon to common breeder throughout, numbers
are more variable on the north slope.

___ **Fox Sparrow** Common
breeder on the south slope and in the Brooks Range, rare
summer resident and possible breeder on the inland coastal plain. Casual summer visitor
along the coast.

___ **Song Sparrow** Accidental
on the north slope.

___ **Whitethroated
Sparrow** Accidental

on the north slope.

___ **Goldencrowned**

Sparrow Rare

visitor to the Brooks Range.

___ **Whitecrowned**

Sparrow Abundant

breeder on the south slope, common breeder

in the Brooks Range, locally rare to fairly common breeder on the inland coastal plain.

Casual coastal visitor.

___ **Darkeyed**

Junco Abundant

breeder on the south slope, rare migrant to the north slope.

___ **Lapland Longspur** Abundant

breeder in the Brooks Range and on the north slope.

Common migrant on the south slope.

___ **Smith's Longspur** Locally

common breeder in the Brooks Range, rare visitor to the north slope.

___ **Snow Bunting** Locally

common breeder on the north slope.

BLACKBIRDS

___ **Redwinged**

Blackbird Accidental

or casual visitor to the north slope.

___ **Rusty Blackbird** Common

breeder on the south slope, uncommon breeder in the Brooks Range. Casual migrant to the north slope.

___ **Brownheaded**

Cowbird Accidental

on the north slope.

FINCHES

___ **Rosy Finch** Uncommon

breeder in the Brooks Range.

___ **Pine Grosbeak** Uncommon

resident and probable breeder on the south slope.

___ **Whitewinged**

Crossbill Uncommon

to locally abundant breeder on the south slope and in the Brooks Range.

___ **Common Redpoll/Hoary Redpoll** Because

of identification difficulties and

broadly overlapping ranges, these 2 species have been recorded as redpoll spp. by most observers. In general, common redpolls probably dominant during the breeding season on the south slope, hoary redpolls on the north slope.

Uncommon breeder on the south slope and in the Brooks Range, locally rare to abundant breeder on the inland coastal plain,

uncommon breeder along the coast. Winter resident on south slope.

___ **Pine Siskin** Uncommon summer resident on the south slope and in the Brooks Range. Rare visitor to the north slope.